



An Anthem Company



# PSC - CUNY

Custom Plan for the City of NY  
NYC Medicare Advantage Plus

Continuing our healthcare journey, *together.*

130106NYEENEBS BV 1/21

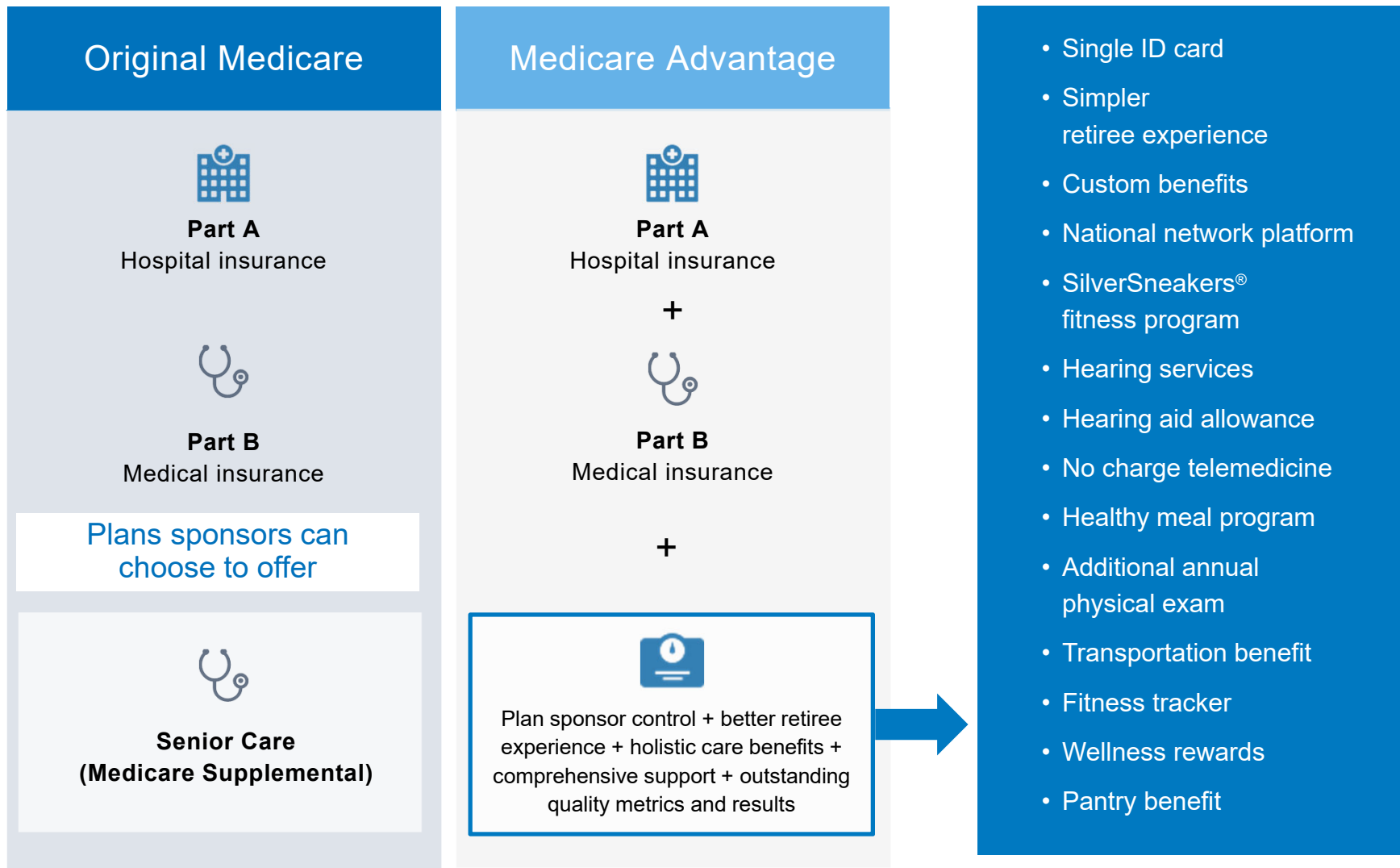
July 27<sup>th</sup> 2021



## Medicare Advantage Plus Overview

- › Medicare Advantage Plus structure
- › National Provider Access
- › Enhancements
- › Benefit Comparison
- › Member Q & A

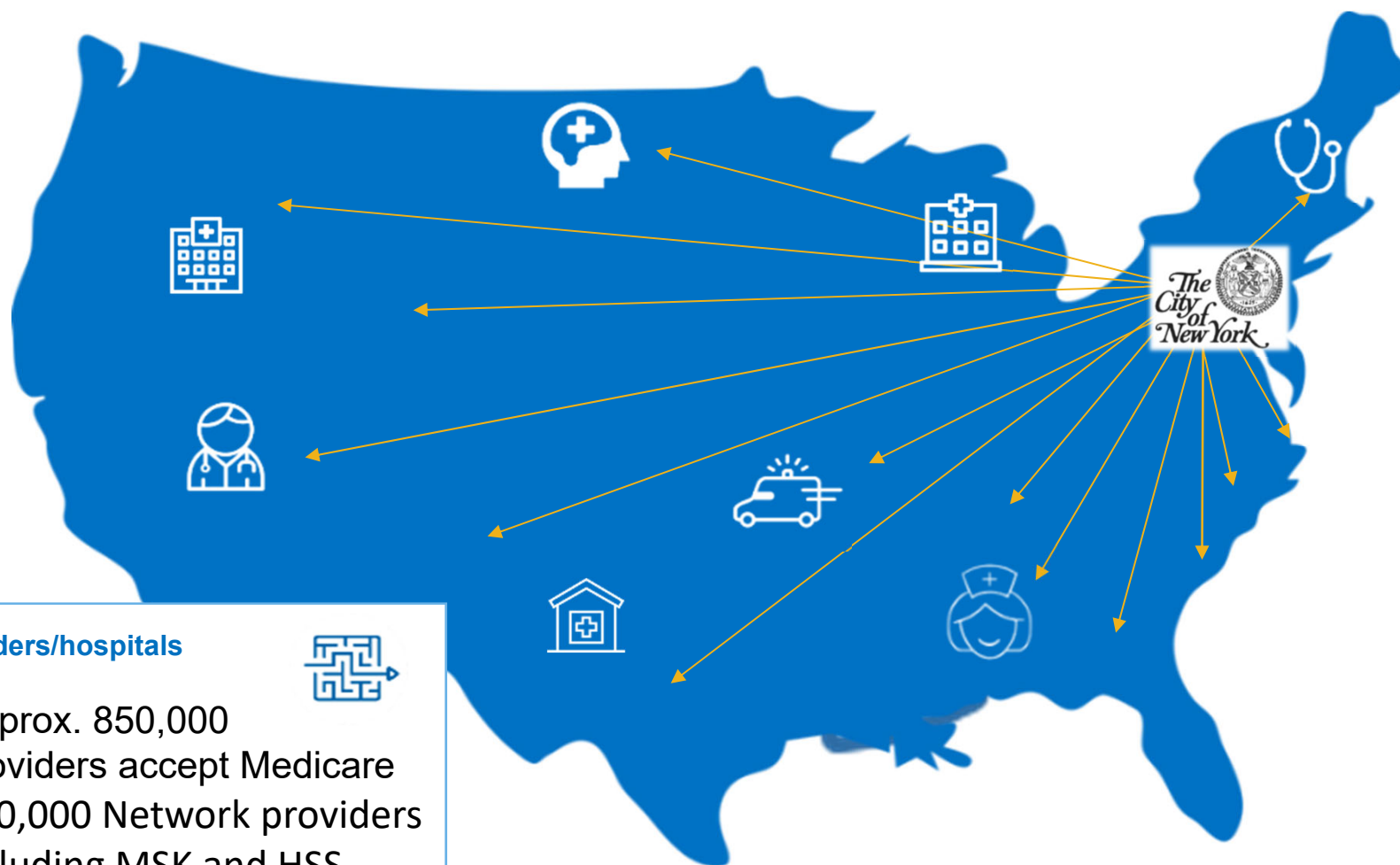
# Retirees have a simpler, richer experience, compared to Original Medicare



The SilverSneakers fitness program is provided by Tivity Health, an independent company. Tivity Health and SilverSneakers are registered trademarks or trademarks of Tivity Health, Inc., and/or its subsidiaries and/or affiliates in the USA and/or other countries. © 2017 Tivity Health, Inc. All rights reserved.

# Care for the City of New York's retirees

Members can continue to see any doctor that accepts Medicare, just as they do today



## Providers/hospitals



- Approx. 850,000 providers accept Medicare
- 640,000 Network providers
- Including MSK and HSS

Plus, a new Blue Cross Blue Shield Association (BCBSA) commitment to strengthen provider collaboration nationwide and close gaps in care

# Enhancements that come with the NYC Medicare Advantage Plus



**Silver Sneakers  
fitness program**



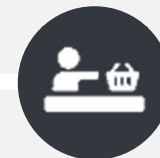
**Concierge  
Health Guide**



**Non Emergency  
Transportation**



**Telehealth with  
LiveHealth Online**



**Healthy meals**



**Healthy pantry**



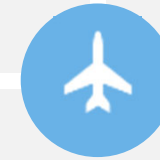
**Wellness Rewards**



**Sydney Mobile App**



**24/7 Nurseline**



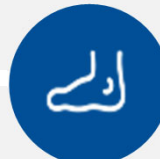
**ER/urgent care  
when traveling**



**Special offers**



**Medicare Community  
Resource Support**



**Routine foot care**



**Health and  
fitness tracker**



**Care  
Coordination**

# Benefit Comparison Highlights

Medical Benefits	*2022 GHI/EBCBS Senior Care	NYC Medicare Advantage Plus
	Member Pays	
	In-Network and Out-of-Network	In-Network and Out-of-Network
Annual Deductible	\$253 combined in-network and out-of-network (\$203 Medicare Part B deductible and \$50 Plan Deductible)	\$253 combined in-network and out-of-network
Annual Maximum Out-of-Pocket**	<b>Unlimited</b>	\$1,470 combined in-network and out-of-network
Inpatient Benefits	In-Network and Out-of-Network	In-Network and Out-of-Network
Inpatient Hospital Care (Including Mental Health/ Substance Abuse)	\$300 per admission/\$750 per person maximum per calendar year	\$300 per admission/\$750 per person maximum per calendar year
Skilled Nursing Facility Care 100 days each benefit period	\$0 co-insurance for days 1-100	\$0 copay for days 1-100
Outpatient Benefits	In-Network and Out-of-Network	In-Network and Out-of-Network
Primary Care Physician (PCP) Visits	\$15 copay***	\$0 copay
Specialist Visits	\$15 copay***	\$15 copay
Emergency Outpatient Care	\$50 co-payment per visit***	\$50 copay, waived if admitted within 72 hours
Dialysis	\$0 copay***	\$0 copay

\* For 2022, the GHI/EBCBS Senior Care Plan includes a \$15 PCP & Specialist Copay

\*\* Annual Maximum Out-of-Pocket does not include RX

\*\*\* Plan pays 20% after Medicare Part B pays 80% of reasonable and customary charges

CONFIDENTIAL AND PROPRIETARY. Any use of this material without specific permission from Anthem is strictly prohibited.